

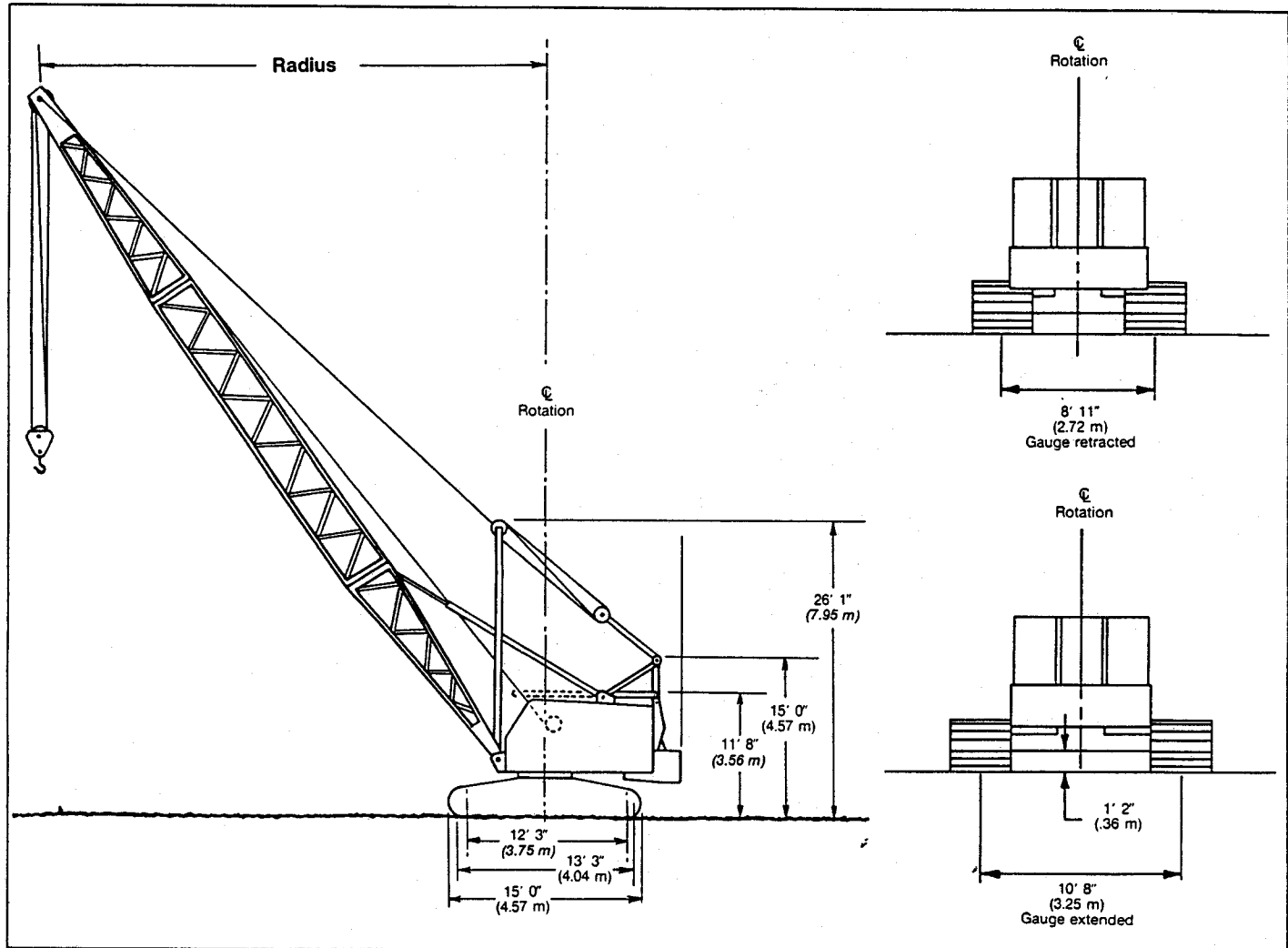
General Specifications

Link-Belt® 45-ton (40.82 metric ton)

Wire rope crawler crane

LS-108B

GENERAL INFORMATION ONLY



General Dimensions	Feet	meters
Basic boom lengths —		
42" x 42" (1.06 x 1.06 m) tubular — open throat	40	12.19
34" x 34" (0.86 x 0.86 m) angle — open throat	40	12.19
42" x 42" (1.06 x 1.06 m) angle — open throat	40	12.19
Height boom hinge pin — angle boom	5' 6"	1.68
Radius boom hinge pin — angle boom	3' 2"	0.97
Height boom hinge pin — tubular boom	5' 6"	1.68
Radius boom hinge pin — tubular boom	4' 2"	1.27
Ground clearance under counterweight "A"	3' 10"	1.17
Ground clearance under counterweight "AB"	2' 10"	0.86
Tailswing of counterweight "A"	11' 4"	3.45
Tailswing of counterweight "AB"	11' 9"	3.58
Minimum ground clearance	1' 2"	0.36

General Dimensions									
Overall Width	24" (0.61 m) Shoes		30" (0.76 m) Shoes		36" (0.91 m) Shoes		42" (1.06 m) Shoes		
	Feet	meters	Feet	meters	Feet	meters	Feet	meters	
Side frames extended	12' 8"	3.86	13' 2"	4.01	13' 8"	4.16	14' 2"	4.32	
Side frames retracted	10' 11"	3.33	11' 5"	3.48	11' 11"	3.63	12' 5"ⓐ	3.78ⓐ	
ⓐ Travel with side frames retracted when equipped with 42" (1.06 m) shoes not recommended due to the possibility of interference of shoes with lower flange of ring gear.									
Height of boom live mast for travel with basic boom horizontal — 40' (12.19 m) tubular boom — 42" (1.06 m) x 42" (1.06 m)								Feet	meters
								14' 0"	4.27