

## Link-Belt® LS-108B lifting crane capacities

PCSA Class 10-132  
Refer to Notes page 2

**Boom** — tubular; 42" x 42" (1.06 x 1.06 m) with open throat top section, retractable high gantry, 1¼" (31.75 m) dia. boom pendants, boom live mast and boom midpoint suspension pendants as required.

**Crawler** — 10'8" (3.25 m) gauge extended, 8'11" (2.72 m) gauge retracted; 15'0" (4.57 m) over-all length.

**Counterweights** — Cwt. "A"; 11,240# (5,098 kg) or 12,000# (5,443 kg). Cwt. "AB"; 24,850# (11,272 kg) or 25,600# (11,612 kg).

⊗ Depending on engine used.

Length	Boom					Side Frames Extended				Side Frames Retracted	
	Radius		Angle	Boom Point Height ⊕		Cwt. "A"		Cwt. "AB"		Cwt. "A" Only	
	Feet	Meters	Degree	Feet	Meters	Pounds	Kilograms	Pounds	Kilograms	Pounds	Kilograms
40' (12.19 m)	10	3.05	81.7	45' 1"	13.74	76,800	34,836	90,000*	40,824*	57,500	26,082
	11	3.35	80.2	44' 11"	13.69	63,000	28,577	90,000	40,824	48,500	22,000
	12	3.66	78.8	44' 8"	13.62	53,300	24,177	76,300	34,610	41,800	18,960
	13	3.96	77.3	44' 6"	13.56	46,100	20,911	66,200	30,028	36,800	16,692
	14	4.27	75.8	44' 4"	13.51	40,600	18,416	58,300	26,445	32,800	14,878
	15	4.57	74.3	44' 0"	13.41	36,300	16,466	52,100	23,633	29,500	13,381
	16	4.88	72.9	43' 8"	13.31	32,700	14,833	47,100	21,365	26,800	12,156
	17	5.18	71.3	43' 5"	13.23	29,800	13,517	42,900	19,459	24,500	11,113
	18	5.49	69.8	43' 0"	13.11	27,300	12,383	39,400	17,872	22,600	10,251
	19	5.79	68.3	42' 8"	13.01	25,200	11,431	36,400	16,511	20,900	9,480
	20	6.10	66.7	42' 4"	12.90	23,400	10,614	33,800	15,332	19,500	8,845
	25	7.62	58.7	39' 8"	12.09	17,000	7,711	24,800	11,249	14,400	6,532
	30	9.14	49.8	36' 1"	11.00	13,300	6,033	19,500	8,845	11,300	5,126
35	10.67	39.7	31' 0"	9.45	10,800	4,899	16,000	7,258	9,200	4,173	
40	12.19	26.5	23' 5"	7.14	9,000	4,082	13,400	6,078	7,700	3,493	
50' (15.24 m)	12	3.66	81.0	54' 11"	16.74	53,100	24,086	76,200	34,564	41,700	18,915
	13	3.96	79.9	54' 8"	16.66	46,000	20,866	66,000	29,938	36,600	16,602
	14	4.27	78.7	54' 6"	16.61	40,500	18,371	58,200	26,400	32,600	14,787
	15	4.57	77.5	54' 4"	16.56	36,100	16,375	52,000	23,587	29,300	13,290
	16	4.88	76.4	54' 1"	16.48	32,600	14,787	47,000	21,319	26,600	12,066
	17	5.18	75.2	53' 10"	16.41	29,600	13,427	42,800	19,414	24,400	11,068
	18	5.49	74.0	53' 7"	16.33	27,100	12,293	39,300	17,826	22,400	10,161
	19	5.79	72.8	53' 4"	16.25	25,000	11,340	36,200	16,420	20,800	9,435
	20	6.10	71.6	52' 11"	16.13	23,200	10,524	33,600	15,241	19,300	8,754
	25	7.62	65.4	51' 0"	15.54	16,800	7,620	24,700	11,204	14,200	6,441
	30	9.14	58.9	48' 4"	14.73	13,100	5,942	19,300	8,754	11,100	5,035
	35	10.67	52.0	44' 11"	13.69	10,600	4,808	15,800	7,167	9,000	4,082
	40	12.19	44.3	40' 5"	12.32	8,800	3,992	13,200	5,988	7,500	3,402
50	15.24	23.7	25' 7"	7.80	6,400	2,903	9,900	4,491	5,400	2,449	
60' (18.29 m)	15	4.57	79.6	64' 6"	19.66	35,900	16,284	51,800	23,496	29,200	13,245
	16	4.88	78.7	64' 4"	19.61	32,400	14,697	46,800	21,228	26,500	12,020
	17	5.18	77.7	64' 1"	19.53	29,500	13,381	42,600	19,323	24,200	10,977
	18	5.49	76.7	63' 11"	19.48	27,000	12,247	39,100	17,736	22,200	10,070
	19	5.79	75.7	63' 7"	19.38	24,900	11,295	36,100	16,375	20,600	9,344
	20	6.10	74.7	63' 5"	19.33	23,000	10,433	33,500	15,196	19,100	8,664
	25	7.62	69.7	61' 10"	18.85	16,700	7,575	24,500	11,113	14,000	6,350
	30	9.14	64.5	59' 8"	18.19	12,900	5,851	19,100	8,664	10,900	4,944
	35	10.67	59.1	57' 0"	17.37	10,400	4,717	15,600	7,076	8,800	3,992
	40	12.19	53.4	57' 8"	17.58	8,600	3,901	13,000	5,897	7,300	3,311
	50	15.24	40.3	44' 4"	13.51	6,200	2,812	9,700	4,400	5,200	2,359
	60	18.29	21.6	27' 7"	8.41	4,700	2,132	7,500	3,402	3,900	1,769
	70' (21.34 m)	15	4.57	81.1	74' 8"	22.76	35,800	16,239	51,600	23,406	29,000
16		4.88	80.3	74' 6"	22.71	32,300	14,651	46,600	21,138	26,300	11,930
17		5.18	79.5	74' 4"	22.66	29,300	13,290	42,400	19,233	24,000	10,886
18		5.49	78.6	74' 1"	22.58	26,800	12,156	38,900	17,645	22,100	10,025
19		5.79	77.8	73' 10"	22.50	24,700	11,204	35,900	16,284	20,400	9,253
20		6.10	77.0	73' 8"	22.45	22,900	10,387	33,300	15,105	18,900	8,573
25		7.62	72.7	72' 4"	22.05	16,500	7,484	24,300	11,023	13,800	6,260
30		9.14	68.4	70' 7"	21.51	12,700	5,761	18,900	8,573	10,700	4,854
35		10.67	63.9	68' 5"	20.85	10,200	4,627	15,400	6,985	8,600	3,901
40		12.19	59.2	65' 8"	20.02	8,400	3,810	12,800	5,806	7,100	3,221
50		15.24	49.1	58' 5"	17.81	6,000	2,722	9,500	4,309	5,000	2,268
60		18.29	37.2	47' 10"	14.58	4,500	2,041	7,300	3,311	3,700	1,678
70		21.34	20.0	29' 5"	8.97	3,500	1,588	5,900	2,676	2,800	1,270
80' (24.38 m)	20	6.10	78.6	83' 11"	25.58	22,700	10,297	33,200	15,060	18,700	8,482
	25	7.62	74.9	82' 10"	25.25	16,300	7,394	24,100	10,932	13,600	6,169
	30	9.14	71.2	81' 2"	24.74	12,500	5,670	18,700	8,482	10,500	4,763
	35	10.67	67.4	79' 4"	24.18	10,000	4,536	15,200	6,895	8,400	3,810
	40	12.19	63.4	77' 0"	23.47	8,200	3,720	12,700	5,761	6,900	3,130
	50	15.24	55.1	71' 1"	21.67	5,800	2,631	9,300	4,218	4,800	2,177
	60	18.29	45.8	62' 10"	19.15	4,300	1,950	7,100	3,221	3,500	1,588
	70	21.34	34.7	51' 0"	15.54	3,300	1,497	5,700	2,586	2,600	1,179
80	24.38	18.7	31' 1"	9.47	2,500	1,134	4,600	2,087	1,900	862	

⊕ Measured from center of boom peak sheave to ground.

(continued)

### GENERAL INFORMATION ONLY

LS-108B lifting crane capacities

Refer to Notes below

Boom					Side Frames Extended				Side Frames Retracted		
Length	Radius		Angle	Boom Point Height <sup>Ⓞ</sup>		Cwt. "A"		Cwt. "AB"		Cwt. "A" Only	
	Feet	Meters	Degree	Feet	Meters	Pounds	Kilograms	Pounds	Kilograms	Pounds	Kilograms
90' (27.34 m)	20	6.10	79.9	94' 1"	28.68	22,500	10,206	33,000	14,969	18,600	8,437
	25	7.62	76.6	93' 1"	28.37	16,200	7,348	23,900	10,841	13,400	6,078
	30	9.14	73.3	91' 8"	27.94	12,300	5,579	18,500	8,392	10,300	4,672
	35	10.67	70.0	90' 1"	27.46	9,800	4,445	15,000	6,804	8,200	3,720
	40	12.19	66.6	88' 1"	26.85	8,000	3,629	12,500	5,670	6,600	2,994
	50	15.24	59.4	83' 0"	25.30	5,600	2,540	9,100	4,128	4,600	2,087
	60	18.29	51.7	76' 1"	23.19	4,100	1,860	6,900	3,130	3,300	1,497
	70	21.34	43.0	66' 11"	20.40	3,100	1,406	5,400	2,449	2,400	1,089
	80	24.38	32.6	54' 0"	16.46	2,300	1,043	4,400	1,996	1,700	771
90	27.34	17.6	32' 8"	9.96	1,700	771	3,600	1,633	1,200	544	
100' (30.48 m)	20	6.10	80.9	104' 5"	31.83	22,300	10,115	32,800	14,878		
	25	7.62	78.0	103' 4"	31.49	16,000	7,258	23,700	10,750		
	30	9.14	75.1	102' 2"	31.14	12,200	5,534	18,300	8,301		
	35	10.67	72.1	100' 7"	30.66	9,600	4,355	14,800	6,713		
	40	12.19	69.0	98' 11"	30.15	7,800	3,538	12,300	5,579		
	50	15.24	62.7	94' 5"	28.78	5,400	2,449	8,900	4,037		
	60	18.29	56.1	88' 6"	26.97	3,900	1,769	6,700	3,039		
	70	21.34	48.9	80' 10"	24.64	2,900	1,315	5,200	2,359		
	80	24.38	40.7	70' 8"	21.54	2,100	953	4,200	1,905		
	90	27.34	30.9	56' 11"	17.35	1,500	680	3,300	1,497		
100	30.48	16.7	34' 2"	10.42	1,100	499	2,700	1,225			
110' (33.53 m)	25	7.62	79.1	113' 6"	34.59	15,800	7,167	23,500	10,660		
	30	9.14	76.4	112' 5"	34.27	12,000	5,443	18,100	8,210		
	35	10.67	73.7	111' 1"	33.86	9,400	4,264	14,600	6,623		
	40	12.19	71.0	109' 6"	33.38	7,600	3,447	12,100	5,489		
	50	15.24	65.4	105' 6"	32.16	5,200	2,359	8,700	3,946		
	60	18.29	59.5	100' 4"	30.58	3,700	1,678	6,500	2,948		
	70	21.34	53.3	93' 8"	28.55	2,700	1,225	5,000	2,268		
	80	24.38	46.4	85' 2"	25.96	1,900	862	3,900	1,769		
	90	27.34	38.7	74' 4"	22.66	1,300	590	3,100	1,406		
	100	30.48	29.4	59' 7"	18.16	800	363	2,500	1,134		
110	33.53	15.9	35' 7"	10.84	500	227	2,000	907			
120' (36.58 m)	25	7.62	80.0	123' 8"	37.69			23,400	10,614		
	30	9.14	77.6	122' 8"	37.39			17,900	8,119		
	35	10.67	75.1	121' 6"	37.03			14,400	6,532		
	40	12.19	72.6	120' 0"	36.58			11,900	5,398		
	50	15.24	67.6	116' 5"	35.48			8,500	3,856		
	60	18.29	62.3	111' 8"	34.04			6,300	2,858		
	70	21.34	56.8	105' 10"	32.26			4,800	2,177		
	80	24.38	50.8	98' 6"	30.02			3,700	1,678		
	90	27.34	44.4	89' 5"	27.26			2,900	1,315		
	100	30.48	37.0	77' 9"	23.70			2,300	1,043		
	110	33.53	28.2	62' 1"	18.92			1,700	771		
	120	36.58	15.2	37' 0"	11.28			1,300	590		
130' (39.62 m)	30	9.14	78.6	132' 11"	40.51			17,700	8,029		
	35	10.67	76.3	131' 10"	40.18			14,200	6,441		
	40	12.19	74.0	130' 6"	39.78			11,700	5,307		
	50	15.24	69.4	127' 2"	38.76			8,300	3,765		
	60	18.29	64.6	122' 11"	37.47			6,100	2,767		
	70	21.34	59.6	117' 7"	35.84			4,600	2,087		
	80	24.38	54.3	111' 1"	33.86			3,500	1,588		
	90	27.34	48.7	103' 2"	31.45			2,700	1,225		
	100	30.48	42.5	93' 4"	28.45			2,000	907		
	110	33.53	35.5	81' 1"	24.71			1,500	680		
	120	36.58	27.0	64' 7"	19.68			1,100	499		
	130	39.62	14.6	38' 4"	11.68			700	318		

Not Applicable

<sup>Ⓞ</sup> Measured from center of boom peak sheave to ground.

Notes — lifting crane capacities

- The capacities included in this chart are the maximum allowable, and are based on machine standing level on firm supporting surface under ideal job conditions.
- Capacities are based on 75% of minimum tipping loads unless marked with an asterisk (\*).  
Asterisk indicates capacities based on factors other than those which would cause a tipping condition.
- Capacities are based on freely suspended loads and make no allowance for such factors as the effect of wind, sudden stopping of loads, supporting surface conditions, and operating speeds.
- Operator must reduce load ratings to take such conditions into account. Deduction from rated capacities must be made for weight of hook block, weighted ball/hook, sling, spreader bar, or other suspended gear.
- 42" (.51 m) Tubular Boom with Open Throat Top Section — for lifting 90,000# (4,082 kg), 6-part load hoist line (3/4" — 19.05 mm, Type "N" wire rope) is required. Check parts of line required for all capacities.
- Retractable high gantry must be fixed in raised position for all capacities on this chart.
- Least stable condition is over the side.
- Operation with cwt. "AB" — with side frames retracted — not permitted.
- Main boom length must not exceed 130' (39.62 m), and jib must not be mounted on boom longer than 110' (33.53 m). Maximum jib length permitted on 110' (33.53 m) main boom — 40' (12.19 m).
- Maximum boom/jib combination permitted — 110' (33.53 m) boom plus 40' (12.19 m) jib, or 100' (30.48 m) boom plus 50' (15.24 m) jib. Maximum jib length permitted — 50' (15.24 m).
- When picking maximum 130' (39.62 m) main boom off ground, boom must be

(continued)

maximum jib capacities shown in above chart.

- e. If total boom/jib length (6-c) exceeds the longest boom length listed in lifting crane capacity chart, deduct 200# (90.72 kg) from the longest boom length shown for the required radius (6-b).

f. Jib capacity is the resulting figure unless restricted by the maximum jib capacities shown in above chart.

7. Determining lifting crane capacities with jib mounted on boom:  
 a. When handling load off main boom peak sheaves, the following reductions in

rated lifting crane capacities must be made to compensate for jib weight —  
 20' (6.10 m) jib — 1,600# (726 kg)  
 30' (9.14 m) jib — 1,900# (862 kg)  
 40' (12.19 m) jib — 2,200# (998 kg)  
 50' (15.24 m) jib — 2,500# (1,134 kg)

## LS-108B dragline/clamshell/magnet capacities

Refer to Notes below

**Boom** — tubular; 42" x 42" (1.06 x 1.06 m) with open throat top section, retractable high gantry, 1 1/4" (31.75 m) dia. boom pendants, boom live mast and boom midpoint suspension pendants as required.

**Crawler** — 10'8" (3.25 m) gauge extended, 8'11" (2.72 m) gauge retracted; 15'0" (4.57 m) over-all length.

**Counterweights** — 11,240# (5,098 kg) or 12,000# (5,443 kg) cwt. "A" only — depending on engine used.

Length	Boom				Side Frames Extended — Cwt. "A" Only				
	Radius		Angle	Boom Point Height ①		Dragline		Clamshell & Magnet	
	Feet	Meters	Degree	Feet	Meters	Pounds	Kilograms	Pounds	Kilograms
40' (12.19 m)	10	3.05	81.7	45' 1"	13.74	—	—	13,600	6,169
	11	3.35	80.2	44' 11"	13.69	—	—	↑	↑
	12	3.66	78.8	44' 8"	13.62	—	—	↑	↑
	13	3.96	77.3	44' 6"	13.56	—	—	↑	↑
	14	4.27	75.8	44' 4"	13.51	—	—	↑	↑
	15	4.57	74.3	44' 0"	13.41	—	—	↑	↑
	16	4.88	72.9	43' 8"	13.31	—	—	↑	↑
	17	5.18	71.3	43' 5"	13.23	—	—	↑	↑
	18	5.49	69.3	43' 0"	13.11	—	—	↑	↑
	19	5.79	68.3	42' 8"	13.01	—	—	↑	↑
	20	6.10	66.7	42' 4"	12.90	—	—	↓	↓
25	7.62	58.7	39' 8"	12.09	11,800	5,352	13,600	6,169	
30	9.14	49.8	36' 1"	11.00	11,800	5,352	12,000	5,443	
35	10.67	39.7	31' 0"	9.45	10,800	4,899	9,700	4,400	
40	12.19	26.5	23' 5"	7.14	—	—	8,100	3,674	
50' (15.24 m)	12	3.66	81.0	54' 11"	16.74	—	—	13,600	6,169
	13	3.96	79.9	54' 8"	16.66	—	—	↑	↑
	14	4.27	78.7	54' 6"	16.61	—	—	↑	↑
	15	4.57	77.5	54' 4"	16.56	—	—	↑	↑
	16	4.88	76.4	54' 1"	16.48	—	—	↑	↑
	17	5.18	75.2	53' 10"	16.41	—	—	↑	↑
	18	5.49	74.0	53' 7"	16.33	—	—	↑	↑
	19	5.79	72.8	53' 4"	16.25	—	—	↑	↑
	20	6.10	71.6	52' 11"	16.13	—	—	↑	↑
	25	7.62	65.4	51' 0"	15.54	—	—	13,600	6,169
	30	9.14	58.9	48' 4"	14.73	11,800	5,352	11,800	5,352
35	10.67	52.0	44' 11"	13.69	10,600	4,808	9,500	4,309	
40	12.19	44.3	40' 5"	12.32	8,800	3,992	7,900	3,583	
50	15.24	23.7	25' 7"	7.80	—	—	5,800	2,631	
60' (18.29 m)	15	4.57	79.6	64' 6"	19.66	—	—	13,600	6,169
	16	4.88	78.7	64' 4"	19.61	—	—	↑	↑
	17	5.18	77.7	64' 1"	19.53	—	—	↑	↑
	18	5.49	76.7	63' 11"	19.48	—	—	↑	↑
	19	5.79	75.7	63' 7"	19.38	—	—	↑	↑
	20	6.10	74.7	63' 5"	19.33	—	—	↑	↑
	25	7.62	69.7	61' 10"	18.85	—	—	13,600	6,169
	30	9.14	64.5	59' 8"	18.19	—	—	11,600	5,262
	35	10.67	59.1	57' 0"	17.37	10,400	4,717	9,400	4,264
	40	12.19	53.4	53' 8"	17.58	8,600	3,901	7,700	3,493
	50	15.24	40.3	44' 4"	13.51	6,200	2,812	5,600	2,540
60	18.29	21.6	27' 7"	8.41	—	—	4,200	1,905	

① Measured from center of boom peak sheave to ground.

### Notes — dragline/clamshell/magnet capacities

- The capacities included in this chart are the maximum allowable, and are based on machine standing level on firm supporting surface under ideal job conditions.
- Capacities are based on not more than 75% of minimum tipping loads for dragline; 67 1/2% for clamshell/magnet.
- Capacities are maximum recommended by Commercial Standard CS90-58 and PCSA Standard #1. User must make allowances for soft or uneven supporting surfaces, rapid cycle operations, bucket suction or other unfavorable conditions which may require smaller buckets or magnets for most efficient operation.
- Weight of bucket or magnet, plus load, should not exceed these capacities.
- Dragline operation with boom angle less than 35° is not recommended.
- Boom length for dragline/clamshell/magnet operation should not exceed 60' (18.29 m).
- Refer notes #5, 6, and 14 under "Notes — lifting crane capacities."

**GENERAL INFORMATION ONLY**

# LS-108B dragline/clamshell/magnet capacities

Refer to Notes below

**Boom** — angle: 34" (0.86 m) wide, 34" (0.86 m) deep with open throat top section, retractable high gantry and 1 1/4" (32 mm) diameter boom pendants.

**Mounting** — crawler: 10'8" (3.25 m) gauge extended, 8'11" (2.72 m) gauge retracted; 15'0" (4.57 m) over-all length.

**Counterweights** — 11,240# (5,098 kg) or 12,000# (5,443 kg) ctwt. "A" only — depending on engine used.

Length	Boom					Side frames extended — Ctwt. "A" Only			
	Radius		Angle	Boom point height ①		Dragline		Clamshell & Magnet	
	Feet	meters	Degree	Feet	meters	Pounds	kilograms	Pounds	kilograms
40' (12.19 m)	10	3.05	80.2	44' 11"	13.69	—	—	13,600	6 169
	12	3.66	77.2	44' 6"	13.56	—	—	↑	↑
	15	4.57	72.8	43' 9"	13.34	—	—	↓	↓
	20	6.10	65.1	41' 10"	12.75	—	—	—	—
	25	7.62	56.9	39' 0"	11.89	11,800	5 352	13,600	6 169
	30	9.14	47.9	35' 3"	10.74	11,800	5 352	12,000	5 443
	35	10.67	37.3	29' 9"	9.07	10,830	4 912	9,750	4 423
40	12.19	22.9	21' 2"	6.45	—	—	8,120	3 683	
50' (15.24 m)	12	3.66	79.8	54' 9"	16.69	—	—	13,600	6 169
	15	4.57	76.3	54' 2"	16.51	—	—	↑	↑
	20	6.10	70.3	52' 8"	16.05	—	—	↓	↓
	25	7.62	64.1	50' 6"	15.39	—	—	13,600	6 169
	30	9.14	57.5	47' 9"	14.55	11,800	5 352	11,800	5 352
	35	10.67	50.4	44' 2"	13.46	10,570	4 795	9,510	4 314
	40	12.19	42.5	39' 4"	11.99	8,760	3 974	7,880	3 574
50	15.24	20.5	23' 0"	7.01	—	—	5,740	2 604	
60' (18.29 m)	15	4.57	78.6	64' 4"	19.61	—	—	13,600	6 169
	20	6.10	73.7	63' 2"	19.25	—	—	13,600	6 169
	25	7.62	68.7	61' 5"	18.72	—	—	13,600	6 169
	30	9.14	63.4	59' 3"	18.06	—	—	11,560	5 244
	35	10.67	57.9	56' 5"	17.20	10,310	4 677	9,290	4 214
	40	12.19	52.1	52' 11"	16.13	8,500	3 856	7,650	3 470
	50	15.24	38.7	43' 0"	13.11	6,100	2 767	5,500	2 495
60	18.29	18.7	24' 9"	7.54	—	—	4,120	1 869	

① Measured vertically from center of boom peak sheave to ground.

## Notes — dragline/clamshell/magnet capacities

- The capacities included in this chart are the maximum allowable, and are based on machine standing level on firm supporting surface under ideal job conditions.
- Capacities are based on not more than 75% of minimum tipping loads for dragline; 67 1/2% for clamshell/magnet.
- Capacities are maximum recommended by Commercial Standard CS90-58 and PCSA Standard #1. User must make allowances for soft or uneven supporting surfaces, rapid cycle operations, bucket suction or other unfavorable conditions which may require smaller buckets or magnets for most efficient operation.
- Weight of bucket or magnet, plus load, should not exceed these capacities.
- Dragline operation with boom angle less than 35° is not recommended.
- Boom length for dragline/clamshell/magnet operation should not exceed 60' (18.29 m).
- Refer to notes #5, 6, 10 and 11 under "Notes — lifting crane capacities."

GENERAL INFORMATION ONLY

We are constantly improving our products and therefore reserve the right to change designs and specifications.

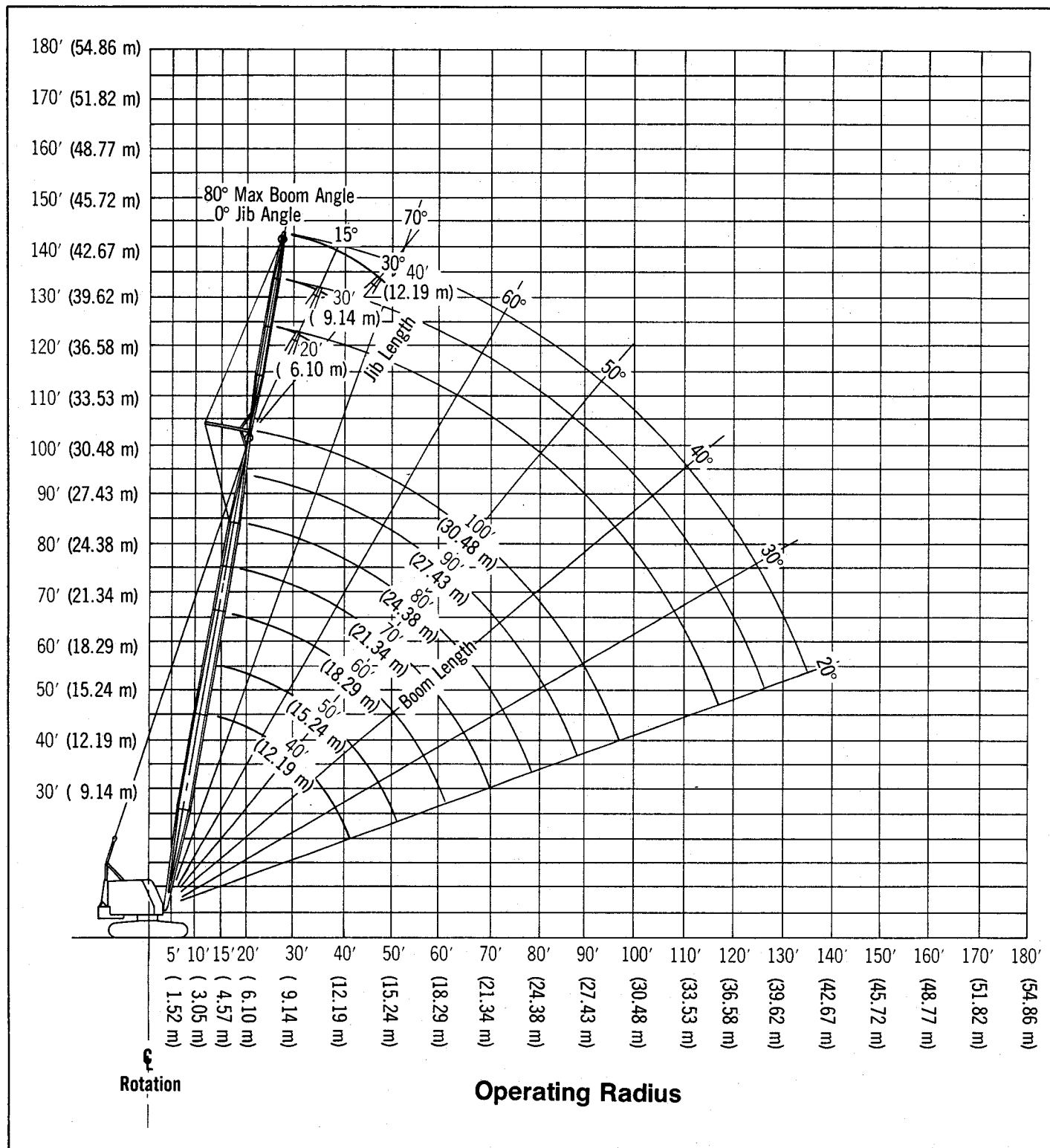


## LS-108B boom/jib working ranges

**Boom** — angle: 34" (0.86 m) wide, 34" (0.86 m) deep with open throat top section, retractable high gantry and 1¼" (32 mm) diameter boom pendants.

**Jib** — angle: 22¾" (0.58 m) wide x 18" (0.46 m) deep.

**Mounting** — crawler: 10'8" (3.25 m) gauge extended, 8'11" (2.72 m) gauge retracted; 15'0" (4.57 m) over-all length.



GENERAL INFORMATION ONLY