



MODEL 6 SPECIFICATIONS

30 Ton (27.216 Metric Ton) Crane/Excavator
PCSA Class 12-114

GENERAL DIMENSIONS

CRAWLER BASE		
Overall length of Standard Crawler	14' 8"	4.47m
Optional Crawler	16' 4"	4.98m
Width with 33" (838.2mm) Treads—Standard	11' 6"	3.51m
—Jobmaster	12' 10"	3.91m
Maximum Height of Crawler	3' 2 3/4"	0.98m
Overall Width of Cab	10' 7 1/2"	3.24m
Swing Clearance	11' 2"	3.40m
Height of Gantry in Lowered Position	12' 7"	3.84m
in Raised Position	16' 7"	5.05m
Distance under Counterweight to Grade	3' 7"	1.09m
Boom Foot Pin to Axis of Rotation	3' 11 3/4"	1.21m
Height of Boom Foot Pin above Grade	5' 0 5/8"	1.54m
SPEEDS		
Swing Speed	3.7 RPM	
Travel Speed	.9 MPH	1.448 km/h

HOIST LINE REEVING

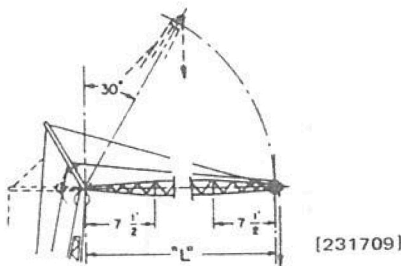
For Loads Over		
lbs	kg	Use Parts Of Line
15,000	6 804	2
30,000	13 608	3
45,000	20 412	4
60,000 Max.	27 216	4

WEIGHTS

	Crawler Length, Overall Width, Tread Size	Complete Machine	Basic 45' (13.72m) Boom	Non-Removable Internal Counterweight	Both Crawler Side Frames	Complete Machine* Less Boom, Both Crawler Side Frames	Travel Base And Axles, Less Side Frames
Crane	14'8" x 11'6" x 33" 4.47m x 3.51m x 838.2mm 16'4" x 11'6" x 33" 4.98m x 3.51m x 838.2mm	93,145# 42 250kg 94,935# 43 062kg	3,750# 1 701kg	15,100# ⁽¹⁾ 6 849kg	21,950# 9 956kg 23,740# 10 768kg	67,445# 30 593kg	12,000# 5 443kg
Dragline	14'8" x 11'6" x 33" 4.47m x 3.51m x 838.2mm 16'4" x 11'6" x 33" 4.98m x 3.51m x 838.2mm	93,380# 42 356kg 95,170# 43 168kg	3,750# 1,701kg	15,100# ⁽¹⁾ 6,849kg	21,950# 9 956kg 23,740# 10 768kg	67,680# 30 699kg	12,000# 5 443kg
Clamshell	14'8" x 11'6" x 33" 4.47m x 3.51m x 838.2mm 16'4" x 11'6" x 33" 4.98m x 3.51m x 838.2mm	92,910# 42 143kg 94,700# 42 955kg	4,095# 1 857kg	15 100# ⁽¹⁾ 6 849kg	21,950# 9 956kg 23,740# 10 768kg	66,865# 30 329kg	12,000# 5 443kg
Jobmaster	16'4" x 12'10" x 33" 4.98m x 3.91m x 838.2mm	88,320# 40 061kg	3,750# 1 701kg	Ext. Removable 6,700# 3 039kg	23,740# 10 768kg	60,830# 27 592kg	14,670# 6 654kg

(1) Optional counterweight package provides 10,750# 4 876kg removable internal counterweight

* Independent Boom Hoist adds 3,040# 1 379kg



JIB CAPACITIES

Jib Length	30° Capacity		Horizontal Capacity		Reduction in Crane Capacity	
15' 4.57m	10,000#	4 536kg	8,000#	3 629kg	1,200#	544kg
20' 6.10m	9,000#	4 082kg	7,000#	3 175kg	1,400#	635kg
25' 7.62m	8,000#	3 629kg	6,000#	2 722kg	1,550#	703kg
30' 9.14m	7,000#	3 175kg	5,000#	2 268kg	1,700#	771kg
Maximum Boom and Jib Combination						
Boom			Jib			
90' (27.43m)			30' (9.14m)			
(231709)						

