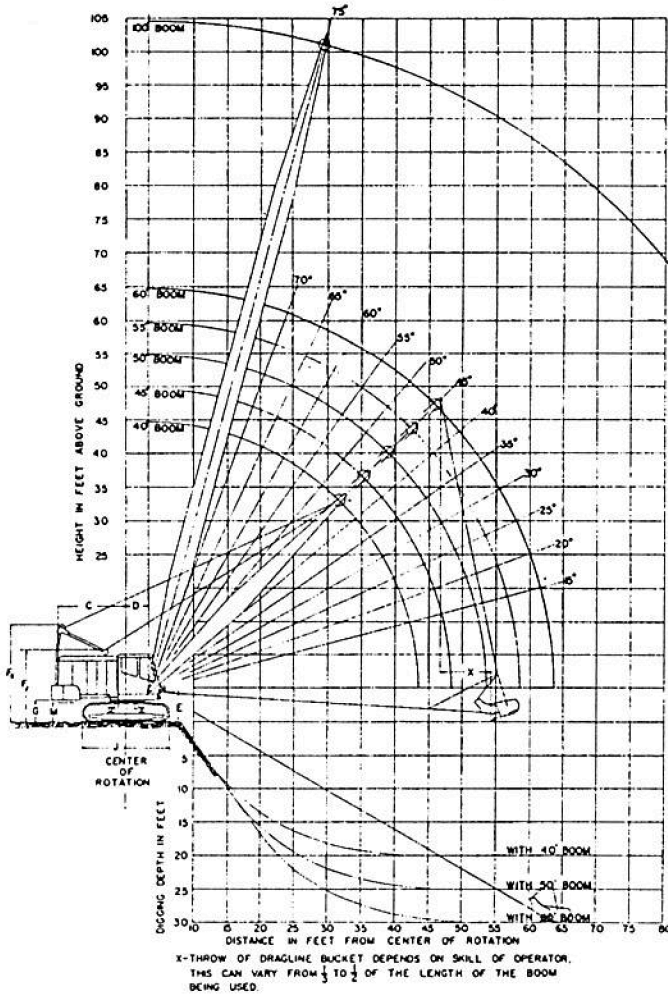


MODEL 41 SPECIFICATIONS

30 Ton (27.216 Metric Ton) Crane

CRANE/DRAGLINE RANGES – MODEL 41



[S-51552]

SPECIAL JOBMASTER CAPACITIES

Boom Length In Feet In Metres	Radius		Clamshell or Magnet		Dragline	
	Feet	Metres	lbs	kg	lbs	kg
40 12.19	25	7.62	10,300	4 672		
	30	9.14	10,300	4 672	8,800	3 992
	35	10.67	10,300	4 672	8,800	3 992
	40	12.19	9,630	4 368	8,800	3 992
50 15.24	30	9.14	10,300	4 672		
	35	10.67	10,300	4 672		
	40	12.19	9,460	4 291	8,800	3 992
	45	13.72	8,035	3 645	8,800	3 992
	50	15.24	6,955	3 155	7,730	3 506
60 18.29	35	10.67	10,300	4 672		
	40	12.19	9,290	4 214		
	45	13.72	7,865	3 568	8,740	3 964
	50	15.24	6,785	3 078	7,540	3 420
	55	16.76	5,940	2 694	6,600	2 994
	60	18.29	5,220	2 368	5,800	2 631

WEIGHTS

	Crawler Length, Overall Width, Tread Size	Complete Machine	Attachment	Removable(1) Counterweight	Both Crawler Side Frames	Complete Machine Less Attachment, Counterweight, Both Crawler Side Frames	Travel Base And Axles Less Side Frames
Crane	15'0" x 12'0" x 30"	77,035#	3,550#	15,800#	16,500#	41,185#	10,120#
	4.57m x 3.66m x 762mm	34,942kg	1 610kg	7 167kg	7 484kg	18 681kg	4 590kg
	15'0" x 12'6" x 36"	77,915#	3,550#	15,800#	17,300#	41,185#	10,120#
	4.57m x 3.81m x 914.4mm	35 342kg	1 610kg	7 167kg	7 883kg	18 681kg	4 590kg
Clamshell	15'0" x 12'0" x 30"	77,295#	3,550#	15,800#	16,500#	41,445#	10,120#
	4.57m x 3.66m x 762mm	35 060kg	1 610kg	7 167kg	7 484kg	18 799kg	4 590kg
	15'0" x 12'6" x 36"	78,175#	3,550#	15,800#	17,380#	41,445#	10,120#
	4.57m x 3.81m x 914.4mm	35 460kg	1 610kg	7 167kg	7 883kg	18 799kg	4 590kg
Dragline	15'0" x 12'0" x 30"	77,655#	3,550#	15,800#	16,500#	41,805#	10,120#
	4.57m x 3.66m x 762mm	35 224kg	1 610kg	7 167kg	7 484kg	18 962kg	4 590kg
	15'0" x 12'6" x 36"	78,535#	3,550#	15,800#	17,380#	41,805#	10,120#
	4.57m x 3.81m x 914.4mm	35 623kg	1 610kg	7 167kg	7 883kg	18 962kg	4 590kg
Special Jobmaster Dragline	15'0" x 12'6" x 36"	76,670#	3,550#	15,800#	17,380#	39,940#	10,120#
	4.57m x 3.81m x 914.4mm	34 777kg	1 610kg	7 167kg	7 883kg	18 116kg	4 590kg

(1) Made up of 9,100# (4 128kg) internal; 6,700# (3 039kg) external.

NORTHWEST ENGINEERING COMPANY • 201 W. Walnut St. • Green Bay, Wisconsin 54305
Because we are continually improving our products, the descriptions and specifications herein are subject to change without notice and do not constitute express warranties. The only warranty applicable is our standard written warranty. We make no other warranty, express or implied, and particularly make no warranty of merchantability or fitness for a particular purpose.