



# MODEL 41 SPECIFICATIONS

## 30 Ton (27.216 Metric Ton) Crane

### GENERAL DIMENSIONS

CRAWLER BASE		
Overall Length	15' 0"	4.57m
Width with 30" (762mm) Treads	12' 0"	3.66m
with 36" (914.4mm) Treads	12' 6"	3.81m
Maximum Height of Crawlers	3' 0"	914.4mm
Overall Width of Cab	9' 4"	2.84m
Swing Clearance	11' 1"	3.38m
Height of Gantry in Lowered Position	11' 7 1/2"	3.54m
in Raised Position	14' 7 1/2"	4.46m
Counterweight to Grade	3' 5 1/2"	1.05m
Boom Foot Pin to Axis of Rotation	3' 3 1/2"	1.00m
Height of Boom Foot Pin Above Grade	4' 6 1/2"	1.38m
SPEEDS		
Swing Speed	3.7 RPM	
Travel Speed	1.0 MPH	1.609 km/h

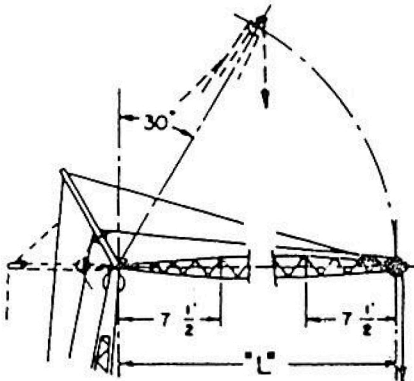
### LIFTING CAPACITIES

Crane Capacities Based On 75% Of Tipping Load

Boom Length In Feet In Metres	Radius		Crane		Magnet		Clamshell		Dragline	
	Feet	Metres	lbs	kg	lbs	kg	lbs	kg	lbs	kg
40 12.19	12	3.66	60,000	27 216						
	15	4.57	40,800	18 507						
	20	6.10	27,000	12 247						
	25	7.62	19,900	9 026	11,740	5 325	10,300	4 672		
	30	9.14	15,600	7 076	11,740	5 325	10,300	4 672	8,800	3 992
	35	10.67	12,800	5 806	11,520	5 225	10,300	4 672	8,800	3 992
40	12.19	10,700	4 853	9,630	4 368	9,630	4 368	8,800	3 992	
50 15.24	15	4.57	40,610	18 420						
	20	6.10	26,810	12 161						
	25	7.62	19,710	8 940						
	30	9.14	15,410	6 990	11,740	5 325	10,300	4 672		
	35	10.67	12,610	5 720	11,350	5 148	10,300	4 672		
	40	12.19	10,510	4 767	9,460	4 291	9,460	4 291	8,800	3 992
45	13.72	8,930	4 051	8,035	3 645	8,035	3 645	8,800	3 992	
50	15.24	7,730	3 506	6,955	3 155	6,955	3 155	7,730	3 506	
60 18.29	15	4.57	40,420	18 344						
	20	6.10	26,620	12 075						
	25	7.62	19,520	8 854						
	30	9.14	15,220	6 904						
	35	10.67	12,420	5 634	11,175	5 069	10,300	4 672		
	40	12.19	10,320	4 681	9,290	4 214	9,290	4 214	8,800	3 992
45	13.72	8,740	3 964	7,865	3 568	7,865	3 568	8,740	3 964	
50	15.24	7,540	3 420	6,785	3 078	6,785	3 078	7,540	3 420	
60	18.29	5,800	2 631	5,220	2 368	5,220	2 368	5,800	2 631	
70 21.34	20	6.10	26,430	11 988						
	25	7.62	19,330	8 768						
	30	9.14	15,030	6 817						
	35	10.67	12,230	5 547						
	40	12.19	10,130	4 595						
	45	13.72	8,550	3 878						
50	15.24	7,350	3 334							
60	18.29	5,610	2 545							
70	21.34	4,390	1 991							
80 24.38	20	6.10	26,240	11 902						
	25	7.62	19,140	8 682						
	30	9.14	14,840	6 731						
	35	10.67	12,040	5 461						
	40	12.19	9,940	4 509						
	45	13.72	8,360	3 792						
50	15.24	7,160	3 248							
60	18.29	5,420	2 458							
70	21.34	4,200	1 905							
80	24.38	3,310	1 501							
90 27.43	25	7.62	18,950	8 596						
	30	9.14	14,650	6 645						
	35	10.67	11,850	5 375						
	40	12.19	9,750	4 423						
	45	13.72	8,170	3 706						
	50	15.24	6,970	3 162						
60	18.29	5,230	2 372							
70	21.34	4,010	1 819							
80	24.38	3,120	1 415							
90	27.43	2,440	1 107							
100 30.48 Maximum Boom Allowed	25	7.62	18,760	8 509						
	30	9.14	14,460	6 559						
	35	10.67	11,660	5 289						
	40	12.19	9,560	4 336						
	45	13.72	7,980	3 620						
	50	15.24	6,780	3 075						
60	18.29	5,040	2 286							
70	21.34	3,820	1 733							
80	24.38	2,930	1 329							
90	27.43	2,250	1 021							
100	30.48	1,710	776							

### HOIST LINE REEVING

For Loads Over		Use Parts Of Line
lbs	kg	
11,000	4 990	2
22,000	9 979	3
33,000	14 969	4
44,000	19 958	5
55,000	24 948	6
60,000	Max. 27 216	6



12317091

[354567]

### JIB CAPACITIES

Jib Length	30° Capacity	Horizontal Capacity	Reduction in Crane Capacity
15' 4.57m	10,000# 4 536kg	8,000# 3 629kg	1,200# 544kg
20' 6.10m	9,000# 4 082kg	7,000# 3 175kg	1,400# 635kg
25' 7.62m	8,000# 3 629kg	6,000# 2 722kg	1,550# 703kg
30' 9.14m	7,000# 3 175kg	5,000# 2 268kg	1,700# 771kg
<b>MAXIMUM COMBINATION BOOM AND JIB</b>			
Boom	Jib		
90' (27.43m)	30' (9.14m)		